

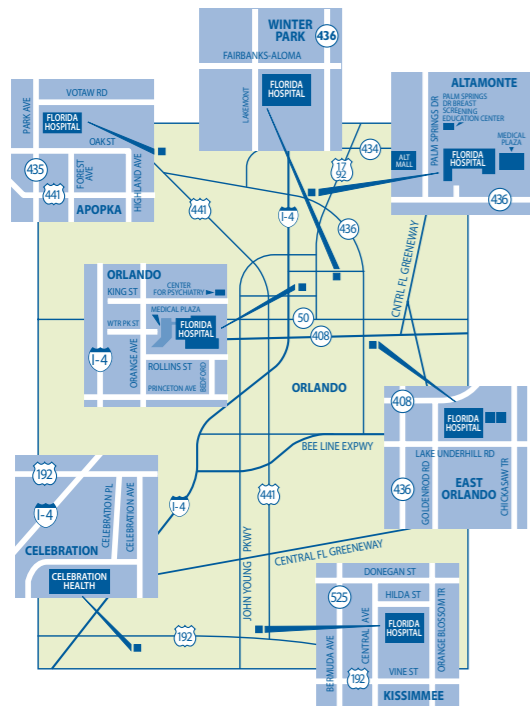
Appointment

Appointment Date _____

Appointment Time _____am _____pm

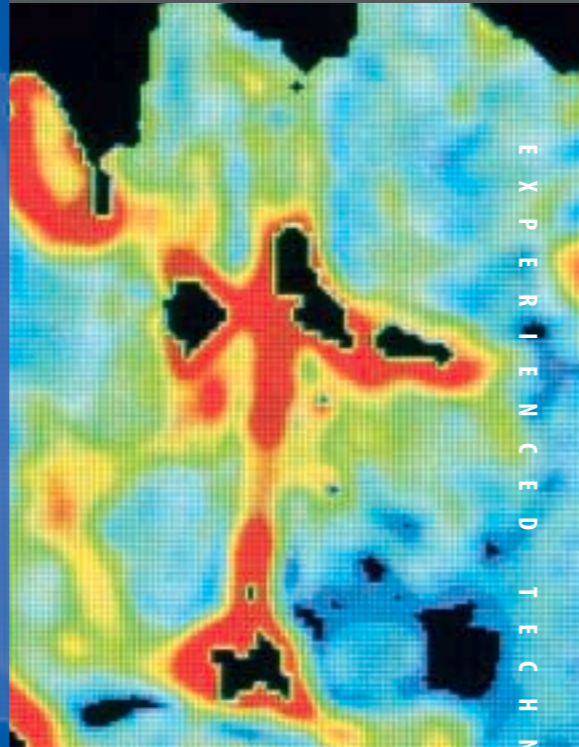
Location

- Orlando
- East Orlando
- Celebration Health
- Kissimmee
- Altamonte
- Lee Road
- Lake Mary Open MRI
- Winter Park



Florida Hospital Magnetic Resonance Imaging (MRI)

patient information guide



Magnetic Resonance Imaging (MRI)

So You Need an MRI...

Your physician has ordered a procedure called a Magnetic Resonance Imaging (MRI) scan. Relax – the test is really quite simple. This brochure is designed to answer your questions about this imaging technique.

What is Magnetic Resonance Imaging?

Magnetic Resonance Imaging (MRI) is a safe and painless way of imaging the internal organs of the body. It produces pictures in "slices" – much like a CT scan – but does not use ionizing radiation. In certain cases, it can even visualize parts of the body not seen by other imaging techniques.

How does an MRI work?

The MRI machine generates radio waves that record signals from the body's atoms; the machine then transforms these signals into images. This is accomplished by placing your body into a cylinder that is the center of a large magnet.

What should I expect?

MRI exams take between 30 and 60 minutes, depending on which part of the body your doctor wants to examine. You will not feel any pain during or after the MRI scan. In fact, sometimes patients fall asleep during the scanning process. During your scan, you will hear a rhythmic tapping sound; this is the normal sound of the magnetic fields as it scans. You may receive an IV (intravenous) injection of a contrast agent to enhance a particular body structure. MRI is considered safe at the levels of magnetic field strength used.

What precautions are taken?

It is very important for us to know if you have any metal in your body before your MRI scan is performed. The MRI uses a very strong magnet that may create movement of certain metal objects in your body. This can be very dangerous and even life-threatening, and may also interfere with the scan. Please let your physician and the MRI staff know if you:

- Have a pacemaker or Automatic Implantable Cardioverter Defibrillator (AICD)
- Have had a mitral or aortic valve replacement
- Have any implanted mechanical or electrical device (i.e. Cochlear or Stapes ear implant, magnetic dentures, spinal stimulator, etc.)
- Have brain aneurysm clips
- Have a history of shrapnel or metallic fragments in your eyes
- Have a history of claustrophobia
- Are pregnant or think you could be pregnant



MRI Network

Accredited by the American College of Radiology (ACR)
601 East Rollins Street
Orlando, Florida 32803
www.flhosp.org

Owned and operated by Adventist Health System

Copyright 2001 • Printed on recycled paper

What do I need to do to prepare for an MRI?

Generally, no preparation is necessary for an MRI scan. If your physician gives you a script or films, please bring them to your appointment. You may eat or drink before the exam and continue your normal activities afterward. If your exam is scheduled with sedation, please check with your physician or the MRI department for further instructions.

You should not take any metal objects into the examination room, including watches, partial plates, dentures, hearing aids, credit cards, pocket knives, lighters, calculators, hair pins, etc.

Items such as wigs and eye makeup may also interfere with brain scans. If you wear a wig or hairpiece, inform the technologist before the exam begins. Also, please do not wear eye makeup if you are scheduled for a brain scan.

How will I find out the results?

Your MRI is supervised and interpreted by a radiologist, a physician specially trained in reading MRI scans and in other diagnostic modalities. The radiologist will consult with your physician on the findings of your MRI exam and send a report. You should receive the results from your physician.

The Florida Hospital MRI Network is accredited by the American College of Radiologists (ACR). The staff consists of technologists specially trained and nationally certified in MRI. They will be happy to assist you in any way possible. If you have any questions, please do not hesitate to ask.

Where do I go?

Florida Hospital has a network of MRI units located throughout Central Florida to ensure an MRI unit is located close to you or your physician's office. For your added convenience, we have day, evening and weekend appointments available. As part of our MRI Network, we also have an Open MRI unit available in Lake Mary.

The Florida Hospital MRI Network consists of:

Florida Hospital Orlando

Florida Medical Plaza
Special Imaging Department
2501 North Orange Avenue, Suite 139
(first floor, North Tower)
Orlando, FL 32804
407/303-2401
407/303-2402 FAX

Florida Hospital Altamonte

Altamonte Medical Plaza
661 East Altamonte Drive, Suite 112 (first floor)
Altamonte Springs, FL 32701
407/303-2380
407/303-2371 FAX



Florida Hospital East Orlando

7727 Lake Underhill Road
Orlando, FL 32822
407/303-8608
407/249-6819 FAX

Florida Hospital Kissimmee

2450 North Orange Blossom Trail
Kissimmee, FL 34744
407/944-3008
407/944-3013 FAX

Winter Park Memorial Hospital

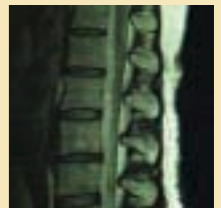
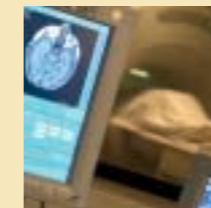
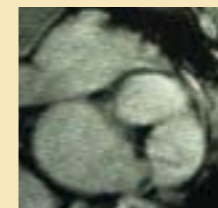
200 North Lakemont Avenue
Winter Park, FL 32792
407/646-7574
407/646-7910 FAX

To schedule an appointment at Orlando, Altamonte, East Orlando, Kissimmee or Winter Park, call 407/303-CARE (2273) or send a fax to 407/303-9627.

Florida Hospital Celebration Health

400 Celebration Place
(second floor, Imaging Center)
Celebration, FL 34747
407/303-4009
407/303-4383 FAX

To schedule an appointment at Celebration Health, call 407/764-4111 in Osceola County.



Florida Hospital Diagnostic Imaging at:

Lee Road

2566 Lee Road
Winter Park, FL 32789
407/629-9397

Lake Mary

4106 West Lake Mary Blvd., Suite 106
Lake Mary, FL 32746
407/333-9766

To schedule an appointment or for more information about Florida Hospital Diagnostic Imaging services at Lee Road or Lake Mary, call 407/834-8722 or send a fax to 407/834-5325.