

Florida Hospital Mammography & Dexa Sites

Diagnostic & Screening Mammograms & Dexa

Florida Hospital Mammography Center

2566 Lee Road
Winter Park, Florida 32789
407/303-1200

Florida Hospital Celebration Health

400 Celebration Place
Celebration, Florida 34747
407/303-4000

Screening Mammograms & Dexa

Florida Hospital East Orlando

7727 Lake Underhill Drive
Orlando, Florida 32822
407-303-8663

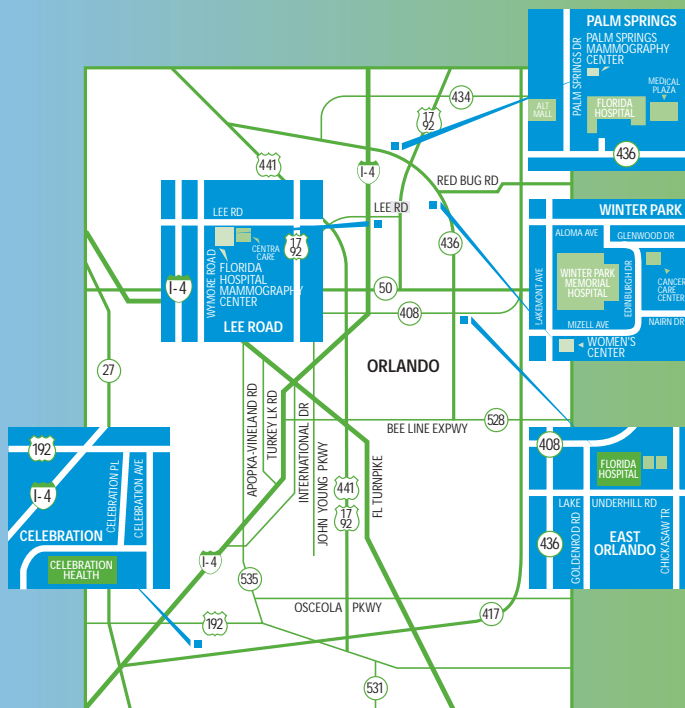
Palm Springs Mammography Center

631 North Palm Springs Drive, Suite 104
Altamonte Springs, Florida 32701
407/767-2260

Winter Park Memorial Hospital, A Florida Hospital

133 South Bensmore Drive
Winter Park, Florida 32792
407/646-7018

To schedule your mammogram at the
Florida Hospital Mammography Center
nearest to or most convenient for you,
call 407/303-CARE (407/303-2273).



Triple Your Odds Against Breast Cancer

Florida Hospital Mammography Services



FLORIDA HOSPITAL
Outpatient Services

The skill to heal. The spirit to care.



FLORIDA HOSPITAL
Outpatient Services

The skill to heal. The spirit to care.

Triple Your Odds Against Breast Cancer

A woman's three best bets against breast cancer are:

- Personal physician care
- Mammography
- Breast-self examination

Why is early detection of breast lumps and tumors so important to the health of a woman? Because of the link between early detection and successful treatment and recovery, the Florida Hospital Mammography Center wants you to know how to "place the odds" in your favor.

Personal Physician Care

An open relationship with your personal physician is one of your best allies against breast cancer. Your physician can monitor your health through regular physical examinations and is the one person who can alert you to potential problems – before they become serious.

Mammography

Regular mammography (low-dose breast X-rays) is recommended for women over the age of 35. Mammography can detect the presence of cancer in the very early – and curable – stages, even when a lump is too small to be felt. Ask your doctor about mammography, or call the Florida Hospital Mammography Center.

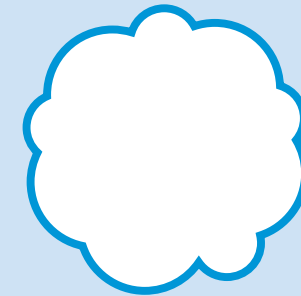
The Mammography Center encourages you to follow these American Cancer Society guidelines for early detection of breast cancer:

- Women 20 years of age and older should perform monthly breast self-examinations.
- Women between 20 and 40 years of age should have a physical examination of their breasts every three years.
- Women should have a baseline mammogram between the ages of 35 and 40.
- Women 40 to 49 years of age should have a physical examination of their breasts annually, as well as a mammogram at one- to two-year intervals.
- Women over 50 years of age should have a mammogram every year.

If you meet these guidelines, a physician's referral for mammography is not necessary at any of the Mammography Center sites.

Breast Self-Examination

Breast Self-Examination (BSE) is highly recommended for the early detection of breast cancer. The American Cancer Society recommends women perform BSE monthly to be aware of how your breasts normally feel and report any new breast changes to your physician as soon as they are found.



Average-size lump found by women untrained in BSE (Breast Self-Examination)



Average-size lump found by women practicing occasional BSE



Average-size lump found by women practicing regular BSE



Average-size lump found by first mammogram



Average-size lump found by regular, repeat mammograms